

Encore Hartco Eclipser 2000 Pneumatic Clinch Clip Closure Tool

with Hanger & Safety Guard options

OPERATING MANUAL

It is the employer's responsibility to assure this manual is read and understood by all personnel assigned to use this tool, and that manual is kept on hand for future reference.



Black Housing
HR2000 Series

Green Housing
EA2000 Series

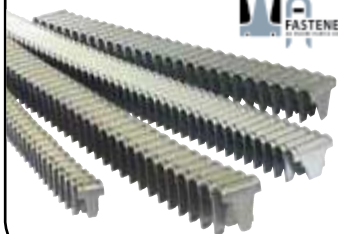
Red Housing
SE2000 Series

"T" MODEL STANDARD

**"T" (Thin) Models
for Trap & Cage
Assembly**

For best results, use genuine

- Encore Hartco E-Clips
- WA Fasteners Clinch Clips



**Optional
Lexan
Safety
Guard**

30090



**Optional
Steel
Safety
Guard**

30094



**Optional
Hanger
Assembly**

30131



SAFETY WARNING



READ THE ENTIRE MANUAL BEFORE OPERATING THE TOOL.



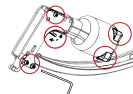
SAFETY GLASSES (ANSI A87) should always be worn by all in the work area while operating, maintaining or repairing a tool. Wear personal protective equipment as required.



NEVER use oxygen, carbon dioxide or any other bottled gas as a power source for this tool, as it will explode and cause serious injury.



BEFORE using tool, check work area for hidden electric cables, utility lines, gas pipes, etc. that can cause a hazard if damaged by the tool.



INSPECT TOOL BEFORE EACH USE. Make sure bolts and cap screws are tight and trigger moves freely.

Never use a tool that leaks air, has missing parts, is damaged, or needs repair.

Do not modify this tool without consulting with an ENCORE HARTCO tool specialist first.

Use only parts, fasteners and accessories recommended and sold by ENCORE HARTCO and its authorized distributors.

TO PREVENT SERIOUS INJURY:

- Do not use the tool when you are tired or under the influence of drugs, alcohol or medication.
- Remove all fasteners from tool BEFORE connecting air.



KEEP HANDS AND FINGERS AWAY FROM BLADE AND ANVIL AREA when connecting air supply and operating tool.

- DISCONNECT THE AIR SUPPLY when mechanically clearing a jam, performing maintenance or repairs, and whenever the tool is not in use.
- NEVER POINT THE TOOL TOWARD YOURSELF OR ANYONE ELSE.
- ALWAYS KEEP YOUR FINGER OFF THE TRIGGER unless actually applying a clip. Unintended pressure on trigger could cause tool to eject a fastener.



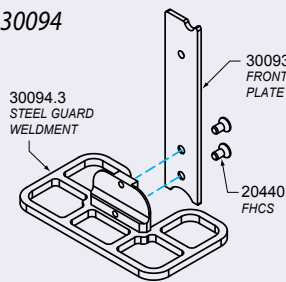
MADE IN THE U.S.A.

www.encorehartco.com
info@encorehartco.com
 Northbrook, IL 60062 U.S.A.
 Phone: (224) 723-5524
 Fax: (224) 723-5526

Eclipser 2000 – Drawing of Tool and Options

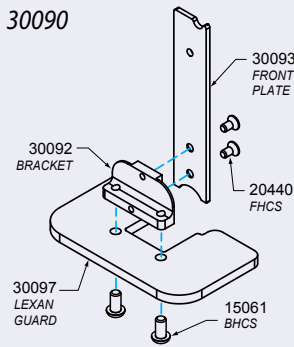
SAFETY GUARD - STEEL

30094

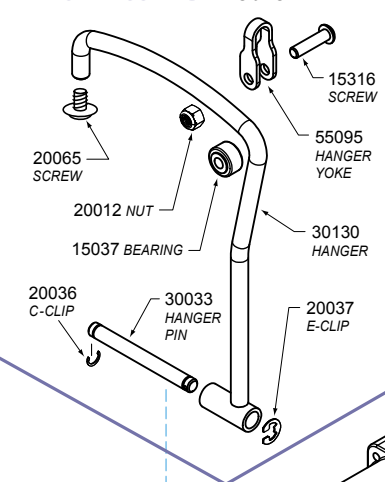


SAFETY GUARD - LEXAN

30090

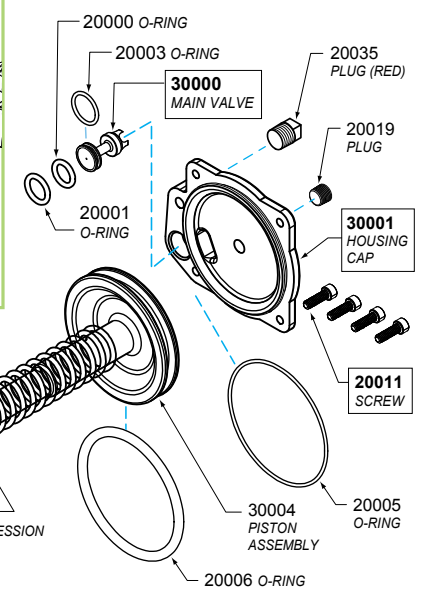
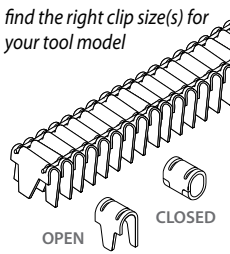


HANGER ASSEMBLY 30131

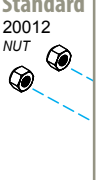


E-CLIPS/CLINCH CLIPS

Go to encorehartco.com to find the right clip size(s) for your tool model



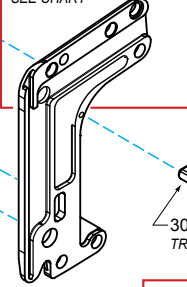
Standard



Thin "T"



SIDE PLATE - Right



FRONT PLATE



BLADE GUIDE



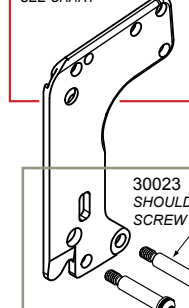
BLADE



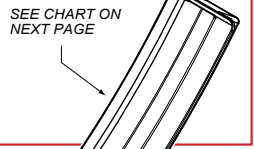
ANVIL



SIDE PLATE - Left



MAGAZINE



PUSHER w/Latch



www.encorehartco.com
info@encorehartco.com
 (224) 723-5524

Standard Models

Thin "T" Models

TROUBLESHOOTING

PROBLEM	CAUSE	SOLUTION	PROBLEM	CAUSE	SOLUTION
Blade does not return	Sticky Main Valve	Lubricate Main Valve (#30000) and check that Main Valve moves	Sluggish tool	Dry Main Valve	Lubricate Main Valve (#30000)
	Dirty Main Valve	1/32" hole must be clear		Tool not cycling	Clogged Trigger Valve
	Loose Housing Cap Screw(s)	Tighten all four Screws (#20011)	Clips not feeding	Obstruction in Magazine	Remove obstruction
	Clip jammed in tool	Disconnect air supply, remove clip		Broken Pusher Spring	Replace Pusher Spring (#30040)
Clip jamming	Clips loaded backwards into the Magazine	Reorient strip so that single ear of clip is facing toward clipping area	Loose clips	Low air pressure	Increase pressure to 80 psi
				Worn Blade or Anvil	Replace worn part (Part #s on pg 3)

Eclipser 2000 – Tool Identification, Specs & Parts

TOOL IDENTIFICATION

00000 SERIAL NUMBER

0↑ / 1↑
BLADE GUIDE ORIENTATION KEY VISIBLE HERE

AA ANVIL NUMBER
LOCATED ON BACK OF ANVIL

BB BLADE NUMBER
LOCATED UNDER FRONT PLATE

2000-AABB = MODEL NUMBER

SPECIFICATIONS

WEIGHT: 4.4 lbs (2.0 kg)

DIMENSIONS: 16.5" x 7" x 4" (419.1 x 177.8 x 101.6mm)

COMPONENT MATERIALS:
Composite plastic housing and clip magazine

CLIP FEEDING METHOD:
Constant force spring

PRIMARY POWER UNIT:
Main cylinder - Bore 3.06" (78mm) spring return

AIR SUPPLY: 80-90 psi (5.5-6.2 bars) of dry, lubricated air

AIR CONSUMPTION (SCFM):
3.56, assuming 90 psi and 1 cycle per second
3.22, assuming 80 psi and 1 cycle per second

MODEL-SPECIFIC PARTS

Model #	Anvil	Blade	Blade Guide (Orientation key only on #30200)	Pusher w/Latch	Front Plate	Magazine	Nut & Screw OR e-Clip & Pin	Side Plate		Fits Clip Width
								Right	Left	
2000-1020	30210	30220	30202	30051	30022	38050	20012 & 30023	30012	30013	A
2000-1020S	30210	30220	30203	30051	30022	38050	20012 & 30023	30012	30013	A
2000-1022	30210	30222	30201	30051	30022	38050	20012 & 30023	30012	30013	A
2000-1024	30210	30224	30208	30051	30022	38050	20012 & 30023	30012	30013	A
2000-1121	30211	30221	30201	30051	30022	38050	20012 & 30023	30012	30013	A
2000-1234	30212	30234	30254	30049	30022	38050	20012 & 30023	30012	30013	A
2000-1533	30215	30233	30255	30051	30056	38050	20012 & 30023	30012	30013	A
2000-1926	30219	30226	30203	30051	30022	38050	20012 & 30023	30012	30013	A
2000-1929	30219	30229	30203	30051	30022	38050	20012 & 30023	30012	30013	A
2000-3236	30232	30236	30207	30031	30022	38050	20012 & 30023	30012	30013	A
2000-4050	30240	30250	30205	30030	30022	38050	20012 & 30023	30012	30013	F
2000-4139	30241	30239	30209	30031	30022	38050	20012 & 30023	30012	30013	E
2000-4151T	30241	30251	30205	30035	30022	38024	20037 & 30041	30012	30013	F
2000-4157T	30241	30257	30204	30035	30022	38060	20037 & 30041	30012	30013	F
2000-4528	30245	30228	30256	30051	30056	38050	20012 & 30023	30012	30013	A
2000-6075	30260	30275	30200 [0↑]	30025	30022	38050	20012 & 30023	30012	30013	F, H
2000-6080	30260	30280	30200 [0↑]	30025	30022	38050	20012 & 30023	30012	30013	F, H
2000-6082	30260	30282	30200 [0↑]	30025	30022	38050	20012 & 30023	30012	30013	F, H
2000-6181	30261	30281	30200 [0↑]	30025	30022	38050	20012 & 30023	30012	30013	F, H
2000-6181T	30261	30281	30200 [0↑]	30035	30022	38024	20037 & 30041	30012	30013	F, H
2000-6183	30261	30283	30200 [1↑]	30025	30022	38050	20012 & 30023	30012	30013	F, H
2000-6183T	30261	30283	30200 [1↑]	30035	30022	38060	20037 & 30041	30012	30013	F, H
2000-6185	30261	30285	30200 [0↑]	30025	30022	38050	20012 & 30023	30012	30013	F, H
2000-6187T	30261	30287	30200 [1↑]	30035	30022	38060	20037 & 30041	30012	30013	F, H
2000-6189	30261	30289	30200-X [1↑]	30025	30022	38050	20012 & 30023	30012	30013	F, H
2000-6788	30267	30288	30206	30025	30022	38060	20012 & 30023	30012	30013	F, H
2000-6791T	30267	30291	30206	30035	30022	38060	20037 & 30041	30012	30013	F, H
2000-6794	30267	30294	30302	30025	30022	38050	20012 & 30023	30012	30013	F, H
2000-7174	30271	30274	30304	30039	30056	38062	20012 & 30023	30036	30037	H
2000-7195	30271	30295	30304	30039	30056	38062	20012 & 30023	30036	30037	H
2000-7196	30271	30296	30303	30039	30056	38062	20012 & 30023	30036	30037	H
2000-7197	30271	30297	30302	30039	30056	38061	20012 & 30023	30036	30037	H

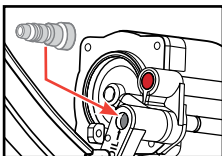
UNIVERSAL PARTS

ITEM #	QTY	DESCRIPTION
20000	1	O-Ring
20001	1	O-Ring
20003	1	O-Ring
20004	1	O-Ring
20005	1	O-Ring
20006	1	O-Ring
20007	1	O-Ring
20008	2	BHCS
20009	1	Dowel pin
20010	2	Dowel pin
20011	6	SHCS
20018	1	Dowel pin
20019	1	Plug
20021	1	Nut
20034	2	Screw
20036	1	C-Clip
20035	1	Plug (Red)
20038	1	SHCS
30000	1	Valve
30001	1	Cap
30002		Housing - GREEN
35002	1	Housing - RED
38002		Housing - BLACK
30004	1	Piston assembly
30005	1	Compression spring
30006	1	Grooved pin
30007	1	Spring
30008	1	Trigger valve
30009	1	Valve sleeve
30010	1	Trigger lever
30011	1	Trigger assembly
30012	1	Side plate, Right
30013	1	Side plate, Left
30014	1	Top Plate
30015	1	Pin
30016	1	Spring
30017	1	Yoke
30018	1	Roller
30019	2	Link
30020	1	Pin, Roller
30021	1	Pin, Blade
30029	1	Pusher Pull
30040	1	Spring

OPTIONAL ADD-ONS

ITEM #	QTY	DESCRIPTION
30090 – Safety Guard - Lexan		
15061	2	BHCS -w-Patch
20440	2	FHCS
30091	1	LEXAN GUARD
30092	1	BRACKET
30093	1	FRONT PLATE
30094 – Safety Guard - Steel		
20440	2	FHCS 10-32 x 3/8
30093	1	Front plate
30094.3	1	Steel guard
30131 – Hanger Assembly		
15037	1	Bearing
15316	1	Screw
20012	1	Nut
20036	1	C-Clip
20037	1	E-Clip
20065	1	Flange head screw
30033	1	Hanger pin
30130	1	Hanger
55095	1	Hanger Yoke

Eclipser 2000 – Operating Instructions



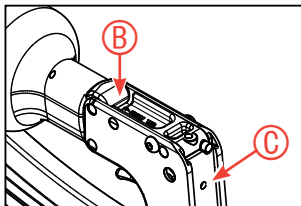
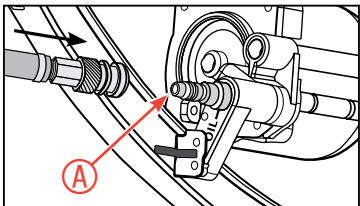
TO GET STARTED

Install a 1/4" NPT fitting (not included) into air inlet opening in the back of the housing, using suitable thread sealant. **DO NOT REMOVE RED PLUG LOCATED ABOVE THIS OPENING.**

RECOMMENDED DAILY MAINTENANCE

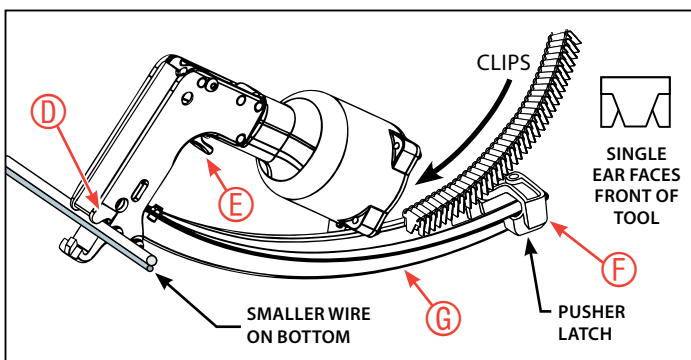
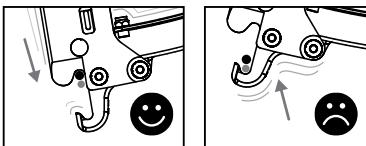
Add 2-3 drops of air tool oil (10-weight recommended) to air inlet hose fitting (A); and openings between the side plates at these two locations:

- in the gap at the back of the top plate and the housing (B)
- the opening on the front plate (C), as shown on affixed label



TOOL OPERATION

1. With magazine empty, connect air supply to air inlet hose fitting (A), keeping fingers and hands away from blade and anvil area. Recommended air supply is 80-90 psi (5.5–6.2 bars) of dry, lubricated air. See "Specifications" on page 3 for Eclipser air consumption (SCFM).
2. Load clips into magazine, single "ear" facing front of tool.
3. Set wires to be fastened into side plate notches (D), guiding them into position by pushing DOWN with tool (see drawing below). For best results, larger wire should be set on top of smaller wire.
4. Squeeze trigger (E) to install clip.



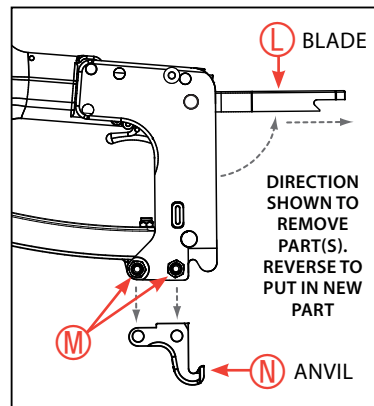
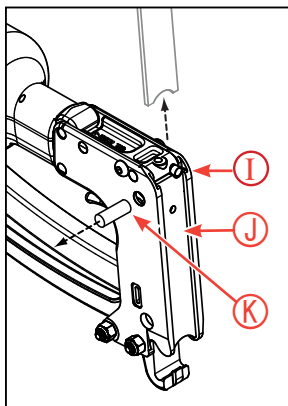
LOADING CLIPS

1. Pull pusher (F) back until it latches at the end of magazine (G).
2. Remove strip of clips from box. Load entire strip into magazine with the single "ear" facing towards the front of the tool.
3. Secure clips in place by depressing pusher latch on underside of magazine.

PARTS REPLACEMENT

BLADE: DISCONNECT AIR. REMOVE CLIPS FROM TOOL.

1. Depress pin (I) at top of front plate (J); slide plate up and remove.
2. Swing blade (L) from tool and align link pin (K) with holes in both side plates. Remove pin through holes and take out old blade.
3. Lubricate new blade.
4. With new blade at 90° angle, align blade hole with links (Part #30019) and side plate holes on both sides. Insert link pin (K) through aligned holes to secure blade. Firmly strike blade face to swing back into original position.
5. Re-lubricate front plate. Depress pin (I) and slide front plate down until pin is released, securing plate in place.

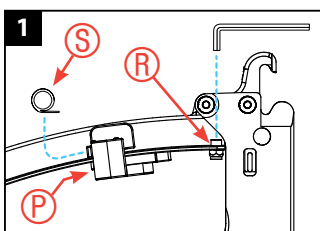


ANVIL: DISCONNECT AIR. REMOVE CLIPS FROM TOOL.

1. Remove lower shoulder screws (M) or pins/e-clips if tool is a "T" model.
2. Remove old anvil (N) and replace.

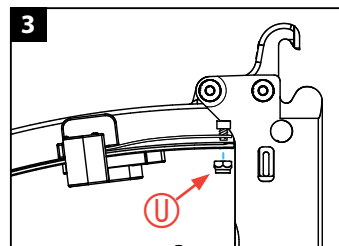
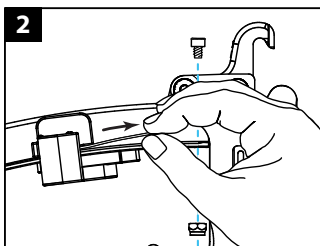
PUSHER SPRING: DISCONNECT AIR. REMOVE CLIPS FROM TOOL. For better access, turn tool upside down.

1. Loosen screw (R) with a 9/64" hex key and remove damaged pusher spring (S) into back of pusher (P).



2. Pull spring out from pusher with fingers or by using the screw. Align the spring hole with the magazine screw hole. Insert screw and secure with nut (U). Be careful not to deform spring.

3. Pull pusher back and latch at end of magazine.



www.encorehartco.com
 info@encorehartco.com
 Northbrook, Illinois 60062 U.S.A.
 Phone: (224) 723-5524 • Fax: (224) 723-5526

To better serve our customers, we regularly add new models and make refinements to parts. The latest information can be found on the Support page at encorehartco.com