

RAPID-CUT Foam Rubber Cutter RC02

Security Advice



Before switching on the foam rubber saw, read the operating instructions!

Wear ear protection.



WARNING! Read all safety warnings, instructions, illustrations and specifications provided with this power tool. Failure to follow all instructions listed below may result in electric shock, fire and/or serious injury. Save all warnings and instructions for future reference.

1. Work area safety

- a) Keep work area clean and well lit. Cluttered or dark areas invite accidents.
- b) Do not operate power tools in explosive atmospheres, such as in the presence of flammable liquids, gases or dust. Power tools create sparks which may ignite the dust or fumes.
- c) Keep children and bystanders away while operating a power tool. Distractions can cause you to lose control.

2. Electrical Safety

- a) Power tool plugs must match the outlet. Never modify the plug in any way. Do not use any adapter plugs with earthed (grounded) power tools. Unmodified plugs and matching outlets will reduce risk of electric shock.
- b) Avoid body contact with earthed or grounded surfaces, such as pipes, radiators, ranges and refrigerators. There is an increased risk of electric shock if your body is earthed or grounded.
- c) Do not expose power tools to rain or wet conditions. Water entering a power tool will increase the risk of electric shock.
- d) Don't abuse cord. Never carry charger by cord or yank it to disconnect from receptacle. Keep cord from heat, oil and sharp edge.
- e) When operating a power tool outdoors, use an extension cord suitable for outdoor use. Use of a cord suitable for outdoor use reduces the risk of electric shock.
- f) If operating a power tool in a damp location is unavoidable, use a residual current device (RCD) protected supply. Use of an RCD reduces the risk of electric shock.
- g) When the tool is not in use, or when being maintained and inspected, disconnect its power cord from the receptacle.

3. Personal Safety

- a) Stay alert, watch what you are doing and use common sense when operating a power tool. Do not use a power tool while you are tired or under the influence of drugs, alcohol or medication.
A moment of inattention while operating power tools may result in serious personal injury.
- b) Use personal protective equipment. Always wear eye protection. Protective equipment such as a dust mask, non-skid safety shoes, hard hat or hearing protection used for appropriate conditions will reduce personal injuries.
- c) Prevent unintentional starting. Ensure the switch is in the off-position before connecting to power source, picking up or carrying the tool. Carrying power tools with your finger on the switch or energising power tools that have the switch on invites accidents.
- d) Remove any adjusting key or wrench before turning the power tool on. A wrench or a key left attached to a rotating part of the power tool may result in personal injury.
- e) Do not overreach. Keep proper footing and balance at all times. This enables better control of the power tool in unexpected situations.
- f) Dress properly. Do not wear loose clothing or jewellery. Keep your hair and clothing away from moving parts. Loose clothes, jewellery or long hair can be caught in moving parts.
- g) If devices are provided for the connection of dust extraction and collection facilities, ensure these are connected and properly used. Use of dust collection can reduce dust-related hazards.
- h) Do not let familiarity gained from frequent use of tools allow you to become complacent and ignore tool safety principles. A careless action can cause severe injury within a fraction of a second.

4. Foam Rubber Cutter Use and Care

- a) Do not force the power tool. Use the correct power tool for your application. The correct power tool will do the job better and safer at the rate for which it was designed.

- b) Do not use the power tool if the switch does not turn it on and off. Any power tool that cannot be controlled with the switch is dangerous and must be repaired.
- c) Disconnect the plug from the power source, if detachable, from the power tool before making any adjustments, changing accessories, or storing er tools. Such preventive safety measures reduce the risk of starting the power tool accidentally.
- d) Store idle power tools out of the reach of children and do not allow persons unfamiliar with the power tool or these instructions to operate the power tool. Power tools are dangerous in the hands of untrained users.
- e) Maintain power tools and accessories. Check for misalignment or binding of moving parts, breakage of parts and any other condition that may affect the power tool's operation. If damaged, have the power tool repaired before use. Many accidents are caused by poorly maintained power tools.
- f) Keep cutting tools sharp and clean. Properly maintained cutting tools with sharp cutting edges are less likely to bind and are easier to control.
- g) Use the power tool, accessories and tool bits etc. in accordance with these instructions, taking into account the working conditions and the work to be performed. Use of the power tool for operations different from those intended could result in a hazardous situation.
- h) Keep handles and grasping surfaces dry, clean and free from oil and grease. Slippery handles and grasping surfaces do not allow for safe handling and control of the tool in unexpected situations.
- i) Don't extent the power cord length or replace the power cord.
- j) Never disassemble the tool, such as protective covering.

5. Security Advices for Foam Rubber Cutter

- a) When the tools are not used, place them in the box and place them in dry and untouchable areas. When using transportation and storage please pay attention to moisture-proof, shock-proof and anticorrosion, please do not throw away during operation.
- b) Use the tool with the voltage listed on the nameplate of your power tool.
- c) Only let qualified personnel repair your foam rubber saw and use only original spare parts for that.
- d) During use, as continuous cutting time increases, the tool's surface temperature will increase and the sound of the gear will also become slightly louder. These are normal.

Advice: After 30 minutes continuous cutting, please stop cutting for 10~15 minutes cool down the tool. This operation will offer user comfortable use and prolong life of the tool.

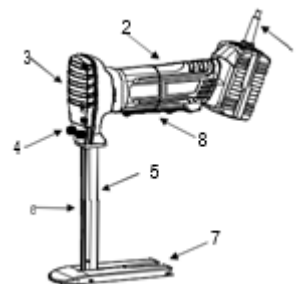
6. Technical Data

Model	RC02
Voltage	220 V~240 V/ 50 Hz
Rated Power	350 W
Tool r.p.m.	3800
Cutting Angle	90°
Max. Cutting Stroke	200mm (8") or 300mm (12")
N.W.	2 kg
Power Cord Length	3.0 m

7. Operational Description

Overview:

- 1. Power Cord
- 2. Power Head
- 3. Gearbox
- 4. Nuts for Saw Blades
- 5. Saw Blade Guide
- 6. Saw Blades
- 7. Footplate
- 8. Switch



Switch Operations:

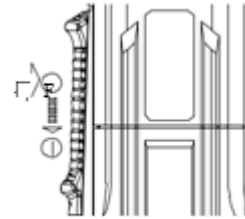
⚠ TO SWITCH TOOL "ON": Squeeze and hold the switch (Noted: Delay a start-up < 1s). Then slide down the switch. TO SWITCH TOOL "OFF": Release pressure on the switch.

NOTED:

1. Before connect to power supplies, please check whether the switch is off, flexible and reliable. By switch tool "ON" and

"OFF", please check whether the switch can spring back to the original position.

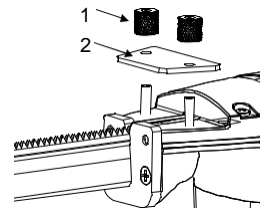
2. The power tool does not run. Restart protection responded. Or if the tool connects to power supplies when the switch is off, or if the power is restored after the interruption, the red signal indicator flashes continuously, the machine will not start. Reboot the tool.



Install or Change Saw Blades :

⚠ WARNING! Please remove the plug when install or change saw blades.

Unscrew nuts 1, remove reciprocating plate 2, and then pull out the worn saw blades. Please install new saw blades as-is, install reciprocating plate 2, and then tight nuts 1.



8. Inspection and Repair

Daily Inspections

- Please check the shell and handle whether damage;
- The power cord and plug damaged, please stop using; c) Please check whether the switch is normal and flexible;
- Whether the mechanical protection device is in good condition;
- Whether the rotation of the tool is flexible, light and free from blocking;
- Long-shelved tools (or before work) must check whether the joints of each thread are tightened to avoid loosening.

Repairs

- Repairs may be carried out by an authorised customer service centre only;
- To ensure the designed operational integrity or power tools and charger, do not remove installed covers or screws.

9.Warranty

This warranty applies only to products which have not been subjected to negligence use, misuse, uses other than those indicated in the product's owner's manual, alteration, accident, use of unauthorized parts, failure to perform periodic maintenance as specified in product's owner's manual, normal wear and tear, use of unauthorized parts or repairs performed at non-authorized service centres.

10.Maintenance and service

Keep the foam rubber saw and the ventilation slots clean to ensure good and safe operation.

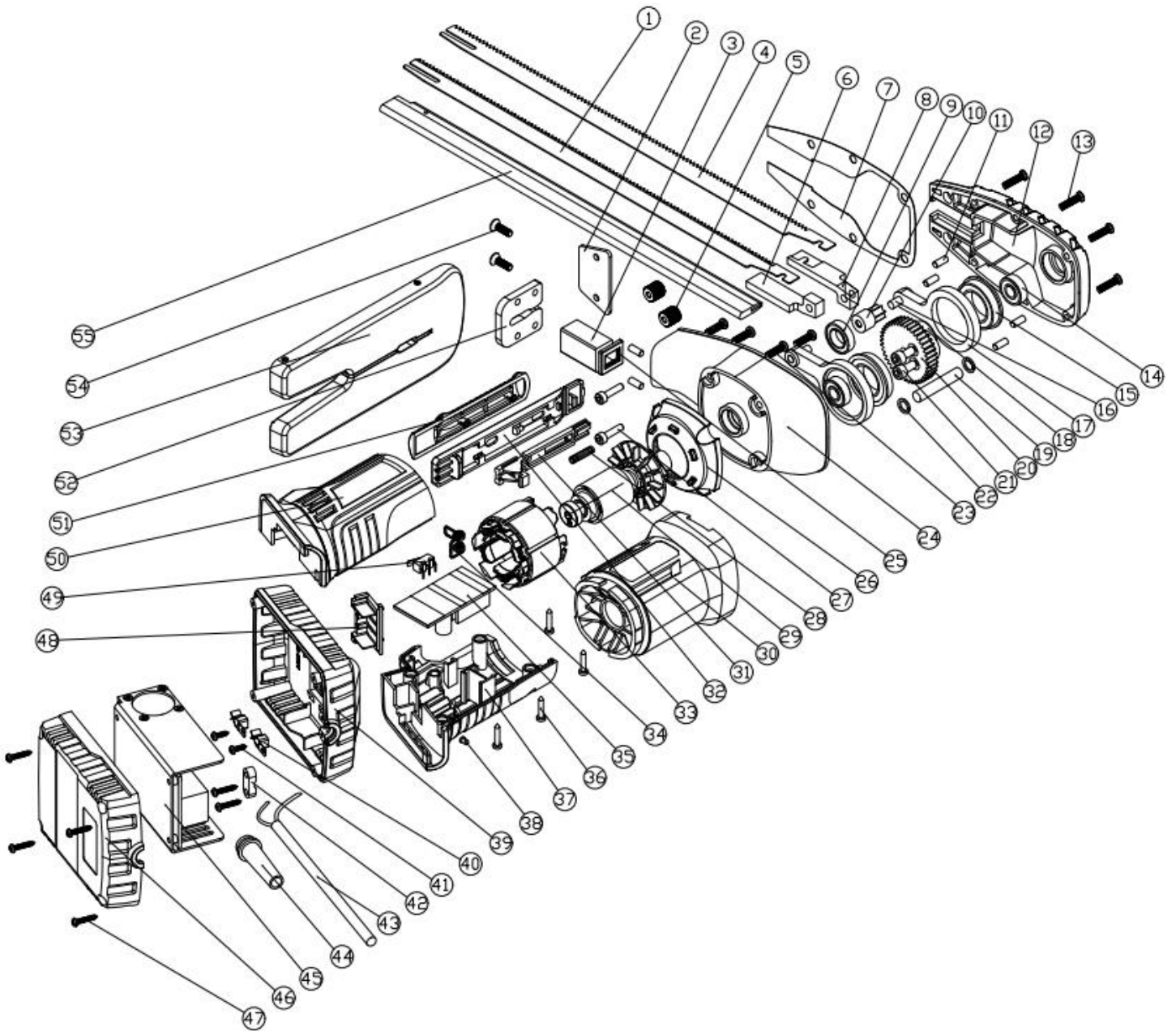
If the foam rubber saw should fail despite the meticulous manufacturing and quality control procedures, the repairs should be done by an authorized service centre.

Have your power tool serviced by a qualified repair person using only identical replacement parts. This will ensure that the safety of the power tool is maintained.

11.Disposal information

⚠ WARNING ! Render redundant power tools unusable by removing the power cord. Waste electrical products should not be disposed of with household waste.

Please recycle where facilities exist. Check with your Local Authority or retailer for recycling advice.



Part No.	Name	Quantity	Part No.	Name	Quantity	Part No.	Name	Quantity
1	LEFT reciprocating saw blade	1	20	Big gear	1	39	Converter top shell	1
2	Reciprocating rod press plate	1	21	Hexagon socket bolt M5X10	2	40	Female insert	2
3	Reciprocating rod support	1	22	Φ7 x10x1 flat pad	2	41	ST3X6 cross with pad for self-	2
4	RIGHT reciprocating saw blade	1	23	ST3.9x16 Flat Tail Attack	4	42	Line pressing board	2
5	Hand a nut	2	24	Gear box	1	43	Power cord	1
6	Left reciprocating lever	1	25	Fluorine rubber	1	44	Convenient set of	1
7	Oil pad	1	26	Guide solar or lunar halo	1	45	Switching circuit board	1
8	Right reciprocating lever	1	27	Hexagon socket bolt M4X12	2	46	Converter housing	1
9	Bearing 6801	1	28	Switch torsional spring	1	47	ST3.5X16 yuan machine self-attack	6
10	Output gear	1	29	AC/DC brushless motor rotor	1	48	Electrode plates	1
11	Positioning pin	6	30	Shell	1	49	Micro switch	1
12	Gear case cover	1	31	Switch card hook	1	50	Left rear shell	1
13	M4X16 cross head screw	4	32	Switch retaining plate	1	51	Switch board	1
14	Bearing 607	2	33	AC/DC brushless motor stator	1	52	Column mounting plate	1
15	Bearing F61804zz	2	34	Switch spring	1	53	Backplane components	1
16	Connecting rod pin	2	35	Brushless motor circuit board	1	54	M4X14 cross countersunk head	2
17	Connecting rod	2	36	ST2.9X16 ymachine self-tapping	4	55	Post	1
18	Eccentric drive shaft	1	37	Right rear shell	1			
19	Transmission pin	1	38	Signal lamp	1			